

Thank you for purchasing our TREKPLAY MP4 player. Before use, please read this manual carefully. In case that the actual settings and options do not match those described in the manual, please visit our Website at www.trekplay.com for the latest product information.

Notice on using this product

Please do not disassemble or repair the player by yourself - it will affect the player's quality guarantee. There are no parts available on the market for this MP3 Player. In case the repair is needed, please contact the dealer or supplier.

Please do not expose this product to:

1. Temperatures above 50°C or under -10°C.
2. Direct sunlight or heat sources.
3. Humid environments (e.g. bathroom).

Please do not turn the player off during formatting, or transferring of data.

Please do not use organic solutions to clean the product (e.g. benzene).

Please backup important data frequently, we cannot be held responsible for any damage caused by the loss of data.

Introduction of functions

- 2.4-inch 65K full-color TFT display (320X240)
- Supports MP1, MP2, MP4, MP3, WMA formats.
- MPEG-4 video format play, full-screen display
- High-definition JPEG picture browse function
- Mini-SD card adapter
- The lithium-ion polymer battery included.
- USB Plug and Play (only Win98 requires driver - included on CD).
- USB2.0 ultra-high speed transmission as 5MB/sec
- Record/Repeat
Records with a microphone and saves as WAV files.
- Supports 3D EQ surrounding effect, customized EQ
- Portable U-disk function, supports Firmware Upgrade
- Supports a number of languages.
- FM function.
- Lyrics Display
- Listen to music while reading E-book, with bookmark function

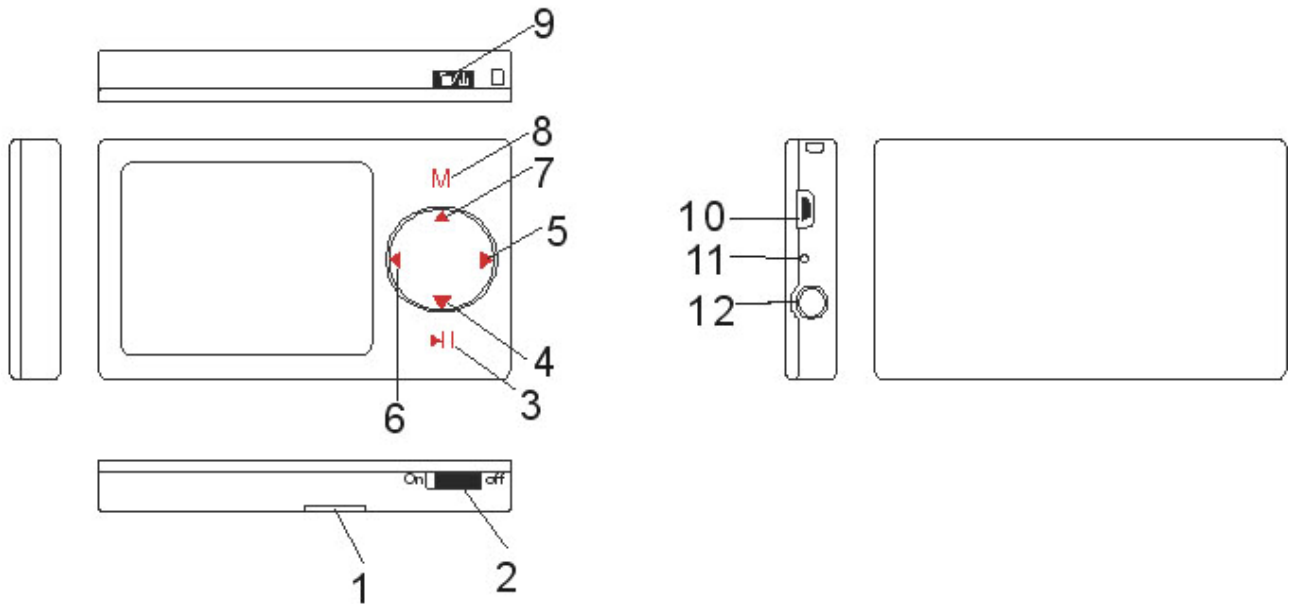
Product Standard Accessories

Your MP4 player package consists of the following:

1. MP4 player,
2. Earphones,
3. User manual,
4. MP4 CD driver,
5. USB cable,
6. Charger.

Product Introduction

Key:



Key Operations

1. SD card socket
2. Power: Power On/ Power Off
3. PLAY: Play/Pause
4. VOL-: Decrease Volume
5. FORWARD: Next. Fast forward
6. REWIND: Previous. Fast backward
7. VOL+: Increase Volume
8. MENU: Return to the menu/Enter the menu
9. Locked/on/Off/A-B
10. USB port
11. Mic
12. Earphone

How to use your player - First step

The player is connected to the PC's USB port with a USB cable.

PC will recognize the player as a removable disk. (Please be sure that you have plugged the cable correctly into the USB port).

The charge function

This player has its own rechargeable battery. When used for the first time, in order to prolong the battery lifetime, you must exhaust its capacity completely, and then carry on with charging.

1. Charge the battery while the player is connected to the computer - while doing this, pressing of any key randomly is invalid.

a) Connect the PC USB port to the MP4 USB port by using the provided USB cable.

b) The power sign is showing charging status when charging. Once fully charged, the power sign will stop blinking – it is full. Please shut the power off. If the unit is being used during charging, it will take

longer to charge.

c) To stop recharging, disconnect USB cable from PC USB port.

2. Connect with the power source to start the charge.

a) Connect the adapter USB port to the MP4 USB port by using the provided USB cable.

b) Connect the adapter plug to the DC port.

c) When charging, the power sign is dynamic. After 3-4 hours, the power sign will stop blinking, and the charging has been completed.

Attention:

1. While charging, please do not unplug the adapter.

2. The battery lifetime is much related to the volume intensity - volume set to very loud can consume much of battery's energy.

File uploading/downloading

a. Open Windows Explorer, and choose the newly found removable disk.

b. You can create a number of folders on the removable disk, in order to classify the music files.

c. From your PC, copy or move files (including music files) directly to the folders on your removable disk.

d. It is not necessary to create new folders; you may copy/move files directly to the removable disk's root directory.

e. While connected to PC, you can delete/rename any file that is in the removable disk storage.

Attention:

Do not remove the player while files from the USB Mass Storage are being played on your computer.

Do not disconnect the player from your computer while transferring files or it may cause damage or data loss.

Disconnecting and connecting to the PC

Before disconnecting from PC, please single-click the green arrow icon in the right taskbar of the computer screen.



When system prompts safe detachment of the hardware, only then can you unplug the player from the USB connection.

If the above procedure is not fully followed, disconnecting from PC may cause serious errors or data loss.



Menu Navigation

Menu button: Enter main menu, submenu return or confirm.

Skip button (▶/◀): Shift the main menus.

Play/Pause button (▶||): Play, Pause.

Press and hold Menu button to enter main menu.
Press ▶/◀ buttons to select your desired option (e.g. Music, Video, Radio, Photo, Text, Record, Explorer, Settings).

Press button (▶||) and button “  ” simultaneously to activate locked function and press button (▶||) and button “  ” again to cancel the locked function.

Music

Select “Music” option and short press “MENU” key to get into “Music”. Press the menu key again, and then get into the explorer list.

Key function :

- Short press “▲/▼” to select the music file
- When selecting the content, short press the “MENU” key to get into the play interface and play music.
- When the music is playing, short press the “MENU” key to enter the explorer interface, long press it then return to the main menu interface. The music can not be interrupted.

Function instructions :

1. Adjusting the volume and selecting the songs

Short press the “▲/▼” key, you can adjust the volume increase/decrease.

Short press the “▶/◀” key, you can select the song.




2. Music list

Short press the “MENU” key and then enter the list of music files.

3. Setting the EQ

Long press the “MENU” key, and then get back to the main interface. Select “setting”, and then select “Music”. Enter the option, you can select “EQ Select”. Enter the EQ selection, you can select Normal/ 3D/ Rock/ Pop/ Class/ Bass/ Jazz/ User EQ and so on. By pressing the “MENU” key to select the EQ options you can enjoy different effects.

4. A-B Repeat

In the play state, short press the “” key once, and the first repeat point is set. It displayed ‘A-’; short press the “” key twice, and the end repeat point is set. It displayed ‘A-B’. The music will be repeated play from the first point to the end point. Short press the “” key for the third time and then exit the repeat mode; in the pause state, the “A-B repeat” will take no effect.

In ‘A-’ or ‘A-B’ state, long press “◀/▶” key. The “A-B repeat” will be canceled and then fast increase/decrease.

5. Fast increase/Fast decrease

In the music play interface, long press “◀/▶”

key to fast increase/fast decrease

Video

- Short press “▲/▼” to select the video file
- Short press the “MENU” key to confirm your selection and play the file.
- When playing, short press the “MENU” key then back to superior video file list; long press the “MENU” key and then return to the main interface of video play.

Function instructions :

1.Fast increase/Fast decrease

In the video play interface, long press “◀/▶” key to fast increase/fast decrease

2.Video file list

Short press the “MENU” key to enter the video file list. Short press the “▲/▼” key to select the video file. Long press the menu key, then it will return to the main interface of the video play.

3.Adjust the volume

Short press the “ ▲/▼ ” key, you can adjust the volume increase/decrease, long press the “ ▲/▼ ” key, the volume will be fast increased/decreased.

FM Tuner

Enter Radio menu, Press Mode key to select: Manual, Preset, Mem, Del, Auto.

Manual: Press "MENU" Key to confirm, press "◀/▶" key to change the frequency manually.

Preset:

Press the menu key to confirm, and then the preset station will be saved.

Mem: press "MENU" key to enter, press "◀/▶" key to select the stations, press "MENU" to confirm store, the frequency displayed on screen will replace the frequency stored before.

Del: press "MENU" key to enter, press "◀/▶" key to select the station that you want to delete, press "MENU" to confirm, after deleting the station's frequency will display "empty".

Auto: Press "MENU" to enter, the player will automatically start searching, Press "◀/▶"key to select the station.

Adjust the volume

Short press the “▲/▼” key and you can adjust the volume.

Note:

In Radio mode, the earphone is used as an antenna, so please keep the earphones connected properly.

PHOTO

In the main menu, select the “Photo” option, short press the “MENU” key to get into the “Explorer”. Press “MENU” key again then get into “Photo” file list.

Key function:

- Short press “▲/▼” to select the file
- Select the file and press the “MENU” key, the selected file will be displayed in full screen, press the “◀/▶” key to select the photo.
- Short pressing the “MENU” key will return you to the superior photo explorer.

Long pressing the “MENU” key will return you to the main interface of “Photo”

TEXT

Select the “ Text ” option and short press the “MENU”key then get into the “Text” file list.

Key function :

Short press “▲/▼”to select file.

Short press the “ MENU ” key to confirm your selection, then you will get into the Text interface.

Short press the“MENU”key and return to superior file list of Text.

Long press the“MENU”key and return to the main interface of“Text”.

Key function:

1.Short press the“MENU”key then get into the reading Text interface.

2.Short press the “◀/▶”key and the text can be turned over in full screen.

3.Short press the“▲/▼”key and the text can be turned over in row.

4.Short press the“▶||” key to load the bookmark list, short press the“▲/▼”key to select the bookmark and short press the“MENU”key to confirm or short press “◀”key to exit.

5.Long press the“▶||” key and display the Save Bookmark list, short press the


“▲/▼”key to select the bookmark and short press the “MENU”key to confirm or short press the “◀” key to exit.



When reading, you can estimate how many content surpluses according to the right side progress strip. The bookmark is only for the current reading document operation. If it reads other documents, the bookmark must be reestablished.

RECORD

Select the “Record” option and then short press the “MENU” key to get into the “Record” interface. Operation measures :

Record

1.Press the “MENU” key to get into the record interface, short press the “ ”key and begin recording.

2.Short press the “ ”key to pause the record, long press the “ ”key to save the recorded files and then enter the preparing state for the next record.

Play record

1. Press the “MENU” key to get into the main interface of “Music play”.

2. Press the “MENU” key to get into the explorer, press the “▲/▼” key to select the folder of “VOICE”.

3. Press the “MENU” key to enter, press the “▲/▼” key to select the recording files, press the “MENU” key again to play the file.

4. Short press the “▲/▼” key to adjust the volume

EXPLORER

Short press the “MENU” key to get into the option, the explorer has listed the saved files.

1. Select the file

Short press the “▲/▼” key to select files ;

When you select the folder, short press the “MENU” key to enter.


When you select the file, press the “MENU” key to get into the relative play interface. If the file cannot be recognized, the key cannot respond.

Press the “◀” key and then return to previous

content.

Press the “MENU” key and then return to the explorer interface.

2.Delete file

When you want to delete file, select the file and short press the “” key, you will see a dialog box, short press the “◀/▶” key and select “Yes” or “No,” short press the “MENU” key to delete the file.

3.If you want to exit the “Delete file”, short press the “◀/▶” key to select “No,” short press the “MENU” key to exit the dialog box.

4.After confirmation that the file has been deleted, currently played music will be stopped.

SETTINGS

In the main menu, please select “settings” and short press the “MENU” key to get into the option. Short press the “▲/▼” key to select the option you want to setup and then short press the “MENU” key to enter.

Notice : In the menu you only need to press the “◀”

key to return to the previous menu.

1. Music

You can setup four options : Repeat Mode, Play Mode, EQ select and User EQ Set. Short press “▲/▼” and select the option or short press the “MENU” key to get into the submenu. While in options, short press the “▲/▼” key again to select the respective settings. Short press the “MENU” key to confirm and then save the settings.

① Repeat Mode

In the menu, you can select seven options: Once, Repeat one, Folder once, Folder Repeat, All Once, All Repeat, and Intro.

② Play Mode

In the menu, there are two options for you to select: Order, Shuffle.

③ EQ select

In this menu, there are eight options for you to select: Normal, 3D, Rock, Pop, Classic, Bass, Jazz, and User EQ.

④ User EQ Set :

In this menu, there are five kinds of frequencies and every frequency has seven levels for users to adjust.

2. Radio

There are two options for you to select: Stereo Switch, FM Region. Short press the “▲/▼” key to select the options or short press the “MENU” key to get into the submenu. Short press the “▲/▼” key again to select the respective settings, short press the “MENU” key to confirm and save settings.

① Stereo SW

In the menu, there are two options: on/off for you to select.

② FM Region

In this menu, there are four options: China, Europe, Japan, and USA for you to select.

3. Record

There are two options: : REC Quality, REC Volume. Short press the “▲/▼” key to select the options or short press the “MENU” key to get into the

submenu. In the two options, short press the “▲/▼”key to select the respective settings then short press the “MENU”key to confirm and save settings.

①REC Quality

In this menu, there are two options: High Quality, General Quality for you to select.

②REC Volume

In this menu, there are five options: : +1, +2, +3, +4, +5 for you to select. The higher the level, the higher the volume.

4.Display

There are three options : Blight Time, Lum, Blight Mode for you to select. Short press the “▲/▼”key to select the options or short press the “MENU”key to get into the submenu. In the three options, short press the “▲/▼”key to select the respective settings then short press the “MENU” key for confirmation and then save the settings.

①Blight Time

In the menu ,there are six options : 5s, 10s,

15s, 20s, 30s, Always On ,for you to select.

②Lum

In the menu, there are five options:1, 2, 3, 4, 5 for you to select. The higher the level, the brighter the brightness.

③Blight Mode

In the menu, there are two options: Normal, Power Save for you to select.

5.Auto Play Set

In the menu, there are two options: Text, Jpeg for you to select, get into each option you can setup the Auto playtime: 1s, 2s, 3s, 4s, and 5s.

6.System

There are three options :Language, About, Upgrade for you to select.

Short press the “▲/▼”key to select the options and short press the“MENU”key to get into the submenu or short press the “◀”key to return to superior menu. In the three options, short press the “▲/▼” key again, after you have selected the respective settings, short press the“MENU”key to confirm

and then save the settings.

①Language

In this menu you can select twelve options: CHI (Trad)/CHI (Simp)/ English/ German/ French/ Italian/Spanish/ Portuguese/ Polish/Dutch/ Greek/ Turkish. In those options, short press the “▲/▼” key to select the respective settings, then short press the “MENU” key to confirm and save the settings.

②About

In the menu you can refer to below options: Ver, Date, FlashMem, CardMem. Those information is read-only, short press the “MENU” key to exit out.

③Upgrade

In this menu you will see a dialog box, short press the “◀/▶” key to select “Yes” or “No,” short press the “MENU” key to confirm and then upgrade the software.

7.PowerOff Time

In this menu you can select only one option: Power off time. In the option, short press the “▲/▼”

key to select the respective settings, and then short press the “MENU” key to confirm saving of settings.

Power Off Time

In this menu, there are six options for you to select: OFF, 10Minute, 15Minute, 30Minute, 60Minute, and 120Minute.

8. Default Set

In this menu you will see a dialog box, short press the “◀/▶” key to select “Yes” or “No,” short press the “MENU” to confirm returning to the Default Set.

Making the video files

AVI is the most popular video format in the portable media player and it is the most popular format on the Internet. The video file adopts XviD/DivX coded format. The quality of the video is high and the file is small.

Supports avi、mpg、mpeg、rm、rmvb、wmv、data transformation to AVI format at high speed and high quality.

System requirements

The basic outfit converter software required:

CPUI ntel or AMD kernel. Intel requires at least Intel Pentium 3 or above, including Intel Celeron series.

Operation steps:

- 1.Run the video conversion tools from the compact disc, click and install the AVConverter V1.0
- 2.After installation, please open the tool or click on the desktop: Start/Program /A Converter/ AVConverter V1.0/send to the desktop shortcut mode.

Operation steps :

- ① Select the source video file, then click on the “source file” button on the right of the conversion tools and then select the file waiting to be transformed.
- ② Select the export file path, click the “Target file path” on the right of the conversion tools. (Suppose as disk D)
- ③ Select the quality transformed and the Aspect Ratio click on “save” and then click on ”Close”.
- ④ After various parameters had been established, please click on "Convert Now" button

After the transformation process had been

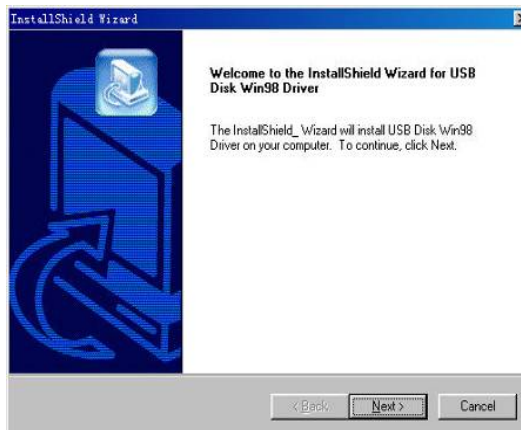
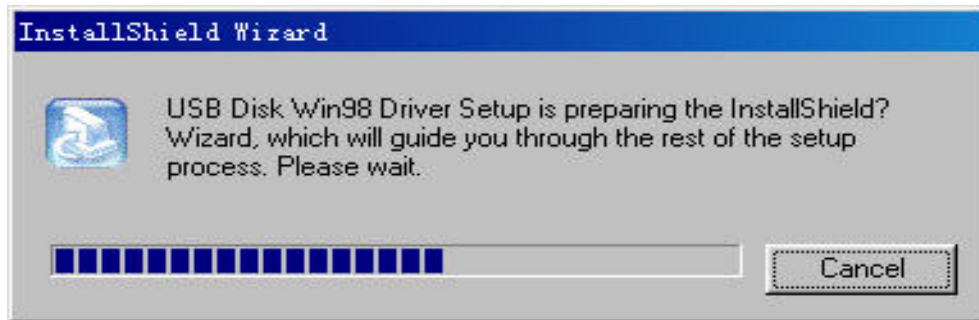
completed, it is indicated that the video has been transformed successfully. The document, which has been transformed, is transferred through the USB dateline to the portable media player, after which you can start to watch.

In order to play video files on this MP4 player, you must change the video files into AVI video format files.

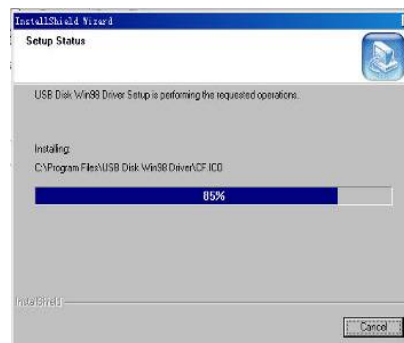
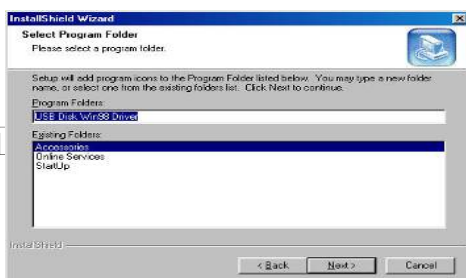
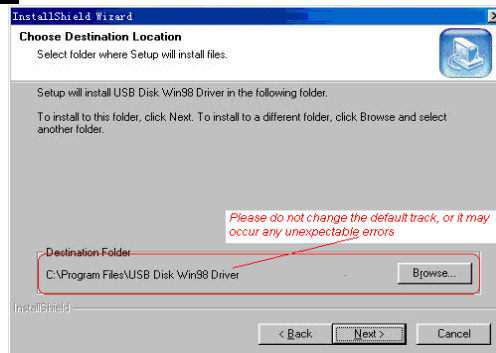
Windows98 - driver installation

Note: Please remove MP4 player from the computer when installing USB Disk Win98 driver in Windows98SE.

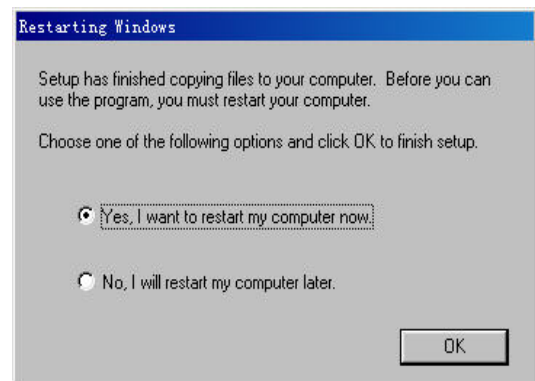
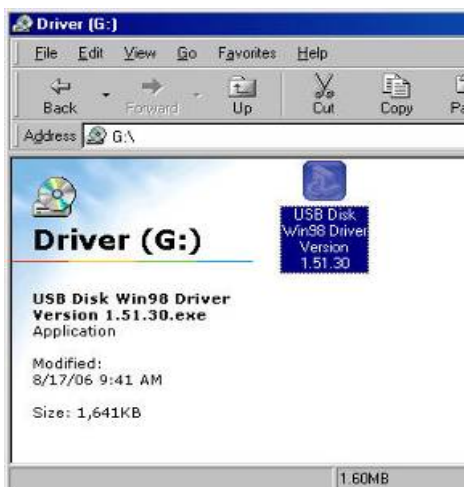
1. Install USB Disk Win98 driver for computer Windows98 Operating system
 - (1) Put CD disk to CD driver.
 - (2) Double click on the USB Disk Win98 driver to start setup.
 - (3) Select installation language and click "OK" to enter the next step (Please select the default language).



(4) Click on “Next>” to enter the next step.

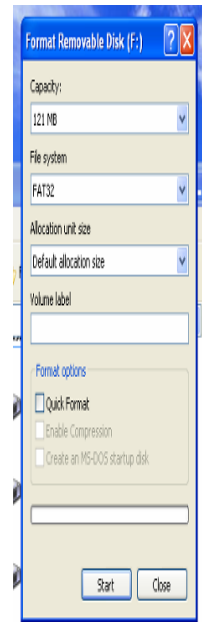
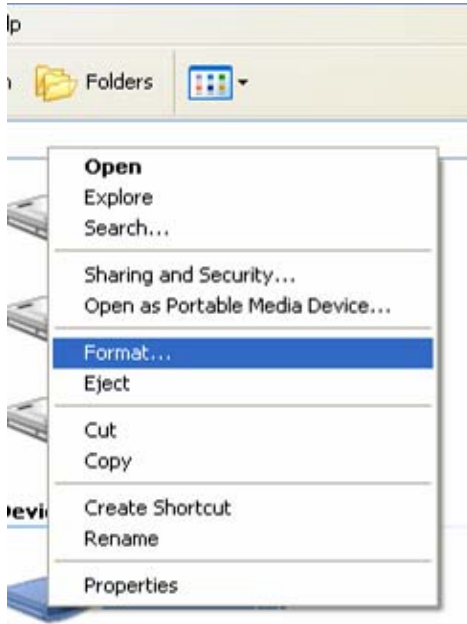


(5) Close the Driver (G:) window, then clicks on “OK” to finish setup process. Restart your computer now, then you can use the MP4 player.



2. Format the MP4 player

The MP4 player is a “FAT 32” format. If you wish to format it, right click on removable disk and choose “Format” mode, then click on “Start” to format in the operating system as shown in the following pictures:



Technical Specification

Display screen	Lattice (320*240) 65K color	
Connection with the computer	High speed USB2.0 (HIGH SPEED)	
EMS memory	The EMS memory flashing in high speed :128M – 4GB	
Electrical source	The longest play time: 5hours	
Record	Record format	WAV (64K bps/128Kbps)
	Record time	8hours (128M Flash)
MP3、WMA	Max output of the earphone	(L) 5mW + (R) 5mW (32Ohm)
	MP3 bit rate	8K bps – 320K bps
	WMA bit rate	32K bps – 384K bps
	Frequency respond	20Hz to 20KHz
	S/N	85dB
FM	Received frequency range	76MHz–90MHz/87.5MHz–108MHz
	Number of stations saved	20 + 20
	Max output of the earphone	(L) 5mW + (R) 5mW (32Ohm)

	S/N	45dB
Music format	MP1、MP2、MP3、WMA、WAV	
Using temperature	0 to 50 degrees	
Language selection	Chinese (Simple), Chinese (Trad), English, German, French, Italian, Spanish, Portuguese, Dutch, polish, Turkish, and Hellenic	
The SYS supported	Windows98/SE/ME/2K/XP/Vista	

Notice:

- Player can not identify the sixth and above sixth level of directory.
- All information given here is subject to change without prior notice.
- The user guide is only for reference.



Notes: